

MSS HOLIDAY COLLECTION SCHEDULE



MERRY & BRIGHT (AND A DAY LATE)

No collection on Christmas Day – Thursday, December 25, 2025. Service for the rest of the week will move one day later through Saturday.



RING IN THE NEW YEAR (A DAY LATER)

No collection on New Year's Day – Thursday, January 1, 2026. Service for the rest of the week will move one day later through Saturday.



CHRISTMAS TREE COMPOSTING

Curbside Pickup:

January 5–16 on your regular collection day.

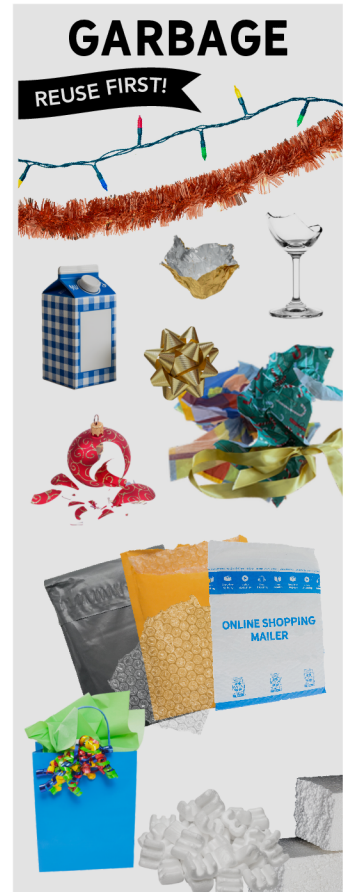
- Remove all ornaments, lights, tinsel, and tree stands.
- Trees over 6 feet in length must be cut in half.
- Place your tree on the curb or cut up in your compost cart.

Compostables Cart:

- Cut trees into smaller sections that fit with the lid closed.

Drop-Off:

- Up to 2 unflocked trees free at the Marin Resource Recovery Center, 565 Jacoby Street, San Rafael.
- Flocked or plastic trees must be disposed at a charge.



EXTRA! EXTRA!

Cardboard:

- Bundle smaller loads (2'x2'x2') with twine and place next to your recycling cart.
- 15+ boxes? Call to schedule a free pickup.
- Free drop-off at the Marin Resource Recovery Center.

Garbage: Call to schedule and to receive a collection quote.

TIME FOR A CLEAR-OUT? YOUR CLEANUP WEEK IS COMING

Twice a year (once in fall and once in spring) residents get a Curbside Clean-up Week. On your regular service day, you can set out up to 14 bags of extra material at no extra charge. Clean-up dates are available on marinsanitaryservice.com.

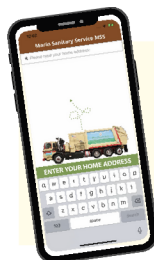
Bulky items like couches, appliances, and mattresses are not collected during curbside clean-ups. To schedule a bulky item pick-up, call (415) 456-2601. Special handling fees may apply.

Find your
clean-up day!



HOLIDAY GRATUITY

Please call the MSS office at (415) 456-2601 to get directions on how to share your gratitude safely.



Download on the
App Store



STILL NOT SURE WHERE IT GOES?

Use the Where Does It Go, Joe? app for quick sorting answers and service updates.

GET IT ON
Google Play



LESS WASTE, MORE JOY



PLAY IT SMART WITH TOYS



REUSE The best toy story ends with reuse! Pass it on, repair it, or donate it.

RECYCLE New toy paper or cardboard packaging goes in recycling.

GARBAGE When a toy can't be fixed, it goes in the garbage cart (remove batteries first).



BATTERY DANGER

Always remove batteries and drop them off for safe recycling at the Marin Hazardous Waste Facility.
marinhhw.com



WRAP WITH PURPOSE

Beautiful gifts don't need wasteful wrapping!

Try these alternatives:

- scarves, tea towels, or fabric
- old maps, sheet music, or newspaper
- sturdy gift boxes that can be reused year after year



GIFT WITH MEANING

Forget the clutter and give with heart.

Choose gifts like:

- **Experiences** a cooking class, movie, concert or picnic hike.
- **Locally made goods:** candles, chocolate, or skincare that support small businesses.
- **Homemade:** cookies, jam, or a cozy scarf.



SINGLE-USE STUFF THAT CAN'T BE REUSED



THOUGHTFUL CHOICES THAT CAN BE USED AGAIN & AGAIN



FOOD IS NOT GARBAGE

A little planning goes a long way in cutting food waste and saving money. Small changes add up to a cleaner kitchen, a lighter bin, and a more sustainable holiday season.

- Match your menu to your guest list to avoid over-prepping.
- Store extras in airtight containers so they stay fresh longer.
- Remind guests to bring leftover containers so they can bring home food
- Compost all food scraps in your green cart — it's the law!



MAKE "LESS IS MORE" YOUR HOLIDAY MANTRA

Luxury isn't about more—it's about meaning. Celebrate beautifully and sustainably, knowing your thoughtful choices help protect the Marin we all love.

REFUSE what you don't need.

REUSE everything you can.

REDUCE excess packaging and single-use décor.

DONATE items instead of discarding.